

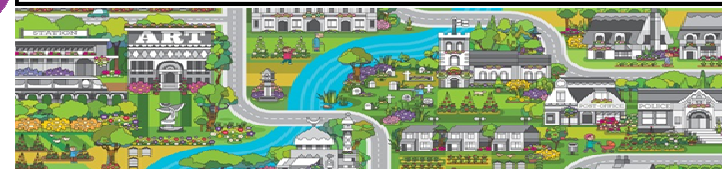


SOUTH WEST



SOUTH WEST

Britain in Bloom - South West Spring Newsletter 2017



Important Dates for 2017

Regional Judging	Wed 5th July to Wed 19th July
IYN Assessments	Mon 3rd July to Monday 31st July
National Judging	Mon 31st July to Friday 11th Aug
Pride in Park Award judging	June 2017 to December 2017
Presentation The Palace Hotel, Torquay	Thursday 5th October

Our South West in Bloom Facebook Page is also a great way for groups to showcase the work they have been doing- if your group has a facebook page, we would love for you to join ours.
<https://www.facebook.com/pages/South-West-In-Bloom/193263914018665>

Glendale

The Secretary,
Denise James, 150 Charlton Road,
Keynsham, Bristol BS31 2JZ.

E Mail southwestinbloom@aol.com .

Tel No 0117 9865830

Web Site www.southwestinbloom.org.uk

We are pleased to see new entries for this years Britain in Bloom South West competition.

The presentation of awards this year will be at
The Palace Hotel, Torquay on Thursday 5th October.



**Britain in Bloom South West
Pride in Park award 2017**

Closing date for entries Friday 12th June.

Glendale



RHS Community Outreach

Greening Grey Britain with the RHS

There is an increasing body of evidence which shows that gardens and green spaces have a positive effect on people's health and wellbeing. In 2016 the RHS Community Outreach team, alongside Bloom and It's Your Neighbourhood groups across the UK, took on the challenge of Greening Grey Britain and transformed 40 grey spaces across the UK into areas which encouraged outdoor activity, reconnected people with healthy, seasonal food, aided relaxation and improved mental health.

'Lost the Plot allotments', an IYN group in St Issey, Cornwall were one of six projects in the South West to receive RHS Community Outreach support as well as £500 worth of tools, plants and materials to transform their community space. The group wanted to revamp a warden controlled area within their village called Sentry Close.



The close is used by people who need a little extra care with their everyday living and the central feature of the close was a rose garden that had seen better days.

The rose garden before the work began in Sentry Close, St Issey, Cornwall

By using plants to attract pollinators and wildlife, installing art features made by the residents and revamping tired street furniture with a fresh coat of paint, the group dramatically transformed the area into a place for people to sit and chat, watch the butterflies and to show the local community and school children what can be achieved through residents working together.

Regional Judging **Wed 5th July to Wed 19th July**

IYN Assessments **Mon 3rd July to Monday 31st July**

Presentation Day at Palace Hotel, Torquay Thursday 5th October 2017



This year the presentation event will be held in the splendid location of The Palace Hotel, Torquay



Provisional ITINERARY FOR THE DAY

9.00 am	Registration
10.00 am	Welcome
10.15 am	Neighbourhood Awards
12.30 pm	Lunch
2.30 pm	South West in Bloom Awards
4.00 pm	Closing
4.15 pm	Judges surgeries for main Competition entries

Lady Emma Fellows will be at the presentation, and we hope that Lord Fellows will also be able to attend, it depends very much on his Diary commitments.

We have kept the cost of the day at £18, and Booking forms are enclosed with this newsletter.

The Last Date for Booking is **Friday 8th September**

Don't forget you will also be able to book on-line on our web site from August 2017. Keep a watch on the web site.

Accommodation can also be booked at the hotel at a rate of £50 per person Bed & Breakfast and £65 per person Dinner Bed & Breakfast. You just need to say that you are attending the SW in Bloom presentation.

Leisure, Tourism & Commercial Award

A very successful first year for this new award with over 20 entries. Establishments from all over the region participated and really pulled out the stops to raise the quality of premises and visitor experience. We will be charging £20 per entry to cover assessment and feedback costs in 2017 but this environmental benchmarking award has much to commend itself for as a measure of quality.

Judges will be looking at areas around entrances, public facilities, signage, standard of maintenance and general appearance. As well as interesting and original floral displays, general landscaping and general maintenance of grassed areas.



They will also be looking at the environmental side of the business and community involvement. The awards take on the traditional format of Gold, Silver Gilt, Silver and Bronze. In 2016 The Warners Hotel, Cricket St Thomas won a Gold in the class, but they also won the City of Bath trophy for Landscaping.

South West in Bloom 2017 Schools Painting Competition The theme for this year is

“ My Favourite Season ”

The age groups are as follows:

Up to 6 years old, 7 – 11 years old, 12 – 16 years old

Art should be a maximum of A3 in size. On the back of each painting, put names, age, and name of school and name of city, town or village. Only one entry per age group, and they should be the winners of your local competition. Please note submitted works are non-returnable!

The best exhibit in each age category should be sent to:

**Richard Budge, Truro City Council,
Municipal Building, Boscawen Street,
Truro, Cornwall, TR1 2NE**

Closing date for entries is Friday 21st July



Residents of Sentry Close helping at a work party

Since completing the project, the group have taken on the task of running the local Primary school gardening club including registering for the RHS School Gardening Awards and with the help of the Cornwall Butterfly Conservation Trust, are developing plans to introduce a new butterfly garden to the area.

The completed garden, St Issey, Cornwall

Applications have now closed for the Greening Grey Britain project in 2017 and the RHS Community Outreach team looks forward to working with more inspirational groups on projects promoting biodiversity this year.



For more information, contact the RHS Community Outreach team:
communities@rhs.org.uk

For information on the Campaign for School Gardening, contact: schoolgardening@rhs.org.uk

Merryn Preece



Creating the wow factor with colour



Patience Atkinson-Gregory of Amberol (www.amberol.co.uk) explains how to install instant colour into your public spaces.



One of the things I love most about Britain in Bloom is the explosion of floral colour that it brings to our public places.

However, colour doesn't just come in the form of flowers. It's possible to add instant colour by being a little more adventurous in your choice of planter. Many of the In Bloom groups and councils that we work with opt for standard black or dark shades such as navy blue. While there's nothing wrong with going for the 'safe' choice, it's possible to make a great impact very easily just by installing coloured self-watering planters. At Amberol we can customise almost any of our self-watering containers in a range of colours from sky blue to cherry to bring an instant splash of vibrancy to your street, park or public space.

Centre stage or part of the backdrop?

When planning displays think about the space that you have and whether you are aiming to create a stunning centrepiece or inject some background colour. The effect that you are aiming for will influence your choice of colour, style and size of planter.

Looking to create the wow factor? Opt for self-watering containers in bright colours such as orange or light green, tiered planters to create cascades of flowers or giant precinct planters.

Don't forget about smaller spaces – one of the advantages of self-watering containers is their flexibility and the fact that they come in all shapes and sizes so you can be more creative.



Make your planter part of the display

In fact, planters should be more than just a receptacle – they can form part of the display itself. For example, one of our best sellers is our self-watering barrel planter. Modelled on traditional hogshead barrels used for making whiskey, they are actually made of recyclable polyethylene.

Pennant Entries

Due to the success of the Pennant entries, we are continuing these classes, but with the village section, there will be a combined class for the whole of the area.

Northern Area Town

Taunton in Bloom
Corsham
Royal Wootton Bassett
Burnham on Sea
Bradford on Avon

Judges Ian Murphy returning, Jane Pagano

Village

Berrynarbor in Bloom
Bovey Tracey
Peasdown St John
Floral Friends of Frampton
Tressilion
Plympton St Maurice

Judges Rosemary Coombes, Rod Pooley

Southern Area Town

St David's, Exeter
St Thomas, Exeter
Crediton in Bloom
Langport
Tavistock
Buckfastleigh

**Judges Graham Price,
Steve Clampin**

Bids

Tavistock
St Austell
Bath

Judge Stevie Rogers

Chairman's Report

Bloom in our region continues to be as strong as ever. We have many new entries and regrettably have lost a few stalwarts from the competition which indicates the need to ask you all for feedback as to how we as a region can re invigorate the competition to reflect the needs of participants . Ideas to Denise please.

We held an inspirational Spring conference and saw some great examples of Bloom in action .Feedback was good and will help us frame future events. Thanks to everyone involved in RHS SWIB all your work does have a collective impact on the economy as well of the environment here in the South West.

On personal notes Terry, Richard and I are involved in an exciting new Project at this Years Chelsea which will demonstrate horticulture from plants grown in our region .

Good luck to our National, Regional, IYN and Commercial entries we wish you all well and thank you in anticipation. You all make a fabulous difference.

Jon Wheatley
Chairman RHS South West in Bloom

COMPETITION ENTRIES 2017

Champion of Champions (J Wheatley)

Shadow judges James Cordingley Josephine Spring

Paignton in Bloom	Large Town
Marlborough	Town
Falmouth in Bloom	Town
Beer	Small town
Tresco	Village
Exmouth in Bloom	Town
Thornbury in Bloom	Town

Tesco Cup 35,000 -79,999 (Richard Budge, Michael Foy)
Torquay in Bloom

St Bridget Cup 19,000 -34,999 (Paul Collier returning, Terry Porter)

Portishead	Babbacombe Bay in Bloom
Yeovil in Bloom	Newquay in Bloom
St Austell	Penzance community Floral Group

Portman Cup 12,000 - 18,999 (Richard Taylor returning, Bob Sweet)

Calne in Bloom	Devizes & Ridgeway
Keynsham in Bloom	Tiverton in Bloom
Truro	

Sargent Cup 9,000 - 11,999 (Christine Fraser returning, John Goulden)

Melksham in bloom	Brixham
Sidmouth	Ilfracombe

Preece Cup 7,000 - 8,999 (Tony Moore returning, Martyn & Valerie Davies)

Glastonbury in Bloom	Hayle in Bloom
Sherborne	

SWTA Cup 5,500 - 6,999 (Tim Ely returning, Martyn Abrahams)
Kingsbridge in Bloom Great Torrington

Ayre Cup 2,500 - 5,499 (Kim Parish, Brenda Wright)

St Just	Radstock
Sodbury in Bloom	Pride in Paulton

Cox Cup 1,500 - 2,499 (Andy Cole, Tom Sharples)

Milborne Port	Cannington	Curry Rival
Hutton		

Mary Mortimer Under 1,500 (Lesley Jellyman, James Cordingley)

Clovelly	St Issey
Ash Martock	

Please note, the Allocation of judges is at this time provisional

They come in three sizes (large, medium and half barrel for smaller spaces) to create an authentic wood effect - but with none of the disadvantages of wood.

Stone is another material that looks stunning in floral displays. It's extremely durable, but stone containers are heavy and cumbersome so can be difficult to place and expensive to move. If you are looking to create a display using a range of materials or to complement a heritage site, church or historical building, stone is a great choice. But for the reasons cited above, you might want to consider a stone effect product like Amberol's self-watering stone trough. Several months in



development, the polyethylene trough has an authentic texture painstakingly modelled on a classic stone trough. Weighing a fraction of stone, they are both portable and durable, allowing you to create stunning floral displays with a strong sense of heritage.

In Bloomers are by nature inventive and imaginative – so this year might be a good time to try something a little different.

For more information about Amberol's products, email sales@amberol.co.uk or call 01773 830 930.

“

Ken Windibank -

Awarded Community Champion at the 2016 Britain in Bloom Awards



"You can't mistake the Windibank's house – their garden is always filled with amazing colour. Portishead in Bloom could not continue without Ken.

He mows all the special parts of Portishead with his trusty mower such as Tom Broom's Green at the top of Roath Road and Rodmoor Gardens. He grows many plants from seeds for his own garden and sells the rest on the Open Gardens weekend when he opens up for the public.

We often need his muscle and he is never daunted with any task that needs doing.

As a bystander said "every town needs a Ken" – we are lucky enough to have one! Long may it continue! It is wonderful to be able to say that Ken's work with Portishead in Bloom has just been recognised.

At the National Celebration gala dinner hosted by the Royal Horticultural Society in Birmingham on October 14th 2016, Ken was one of twelve people from all over the country to be awarded a "Community Champion" certificate together with a solid glass plaque".



March Of The Geophytes

By Lewis Normand, Head of Garden Design
at Glendale Horticulture

Horticulturally speaking, the new year is traditionally observed with the arrival of flowering spring bulbs, which lighten up what can otherwise be, drab and fairly lifeless spaces in our gardens. The relatively quiet flowering period may be marred by freezing temperatures; these resilient and short season powerhouses make every effort to break through frozen ground, claw through snow and to open flower when the sun catches their petals. For that reason alone, they would be worthwhile additions to any garden, but in light of the absence of most other flowering plants; particularly herbaceous perennials, bulbs are a vital source of colour during the winter. Often forgotten about in planting schemes, or added as an afterthought in designed spaces, we rarely give bulbs the respect they deserve as showcase plants that aren't greedy for space.



Their ability to come up from beneath the ground, flower, dieback and let other plants take their place, only to return and do the same year on year is a wonderful gift to the gardener. Their resilience as plants capable of com-

peting with lawns is particularly helpful as they can change the complexion of a landscape or garden providing masses of colour against a green foil.

If we look then at some of the earliest delights of the garden and landscape, we can quickly see just how prized these plants are in our gardens.



Galanthus (Snowdrops) in conjunction with Eranthis (Winter Aconites) are traditionally considered to be the 'Harbingers of Spring', as their presence indicates the lengthening of daylight hours and the approach of warmer weather.

To Galanthophiles (Snowdrop Collectors/Fanatics/Obsessives), the cold winter months are well worth the wait and over a thousand cultivars of Galanthus are now available through collectors groups and specialist plant shows, showing tremendous diversity in the Genus.



Wild Flower mixtures – promoted by the RHS, these have come to the fore in recent years and they can look really lovely once established. But there are many others to choose from such as a summer long flowering annual mixtures, cottage garden or shade blends or perhaps a wildlife attracting mixture? They are easy to sow and easy to grow mixes that are a great way to clothe a large area.

Perennial flowers – increasingly popular and central to the RHS policy of sustainability, plant breeders are working hard to improve plant performance, one aspect of which is to encourage first year flowering in many species. Here are just a couple of the new arrivals for this year:



Leucanthemum
Crazy Dazy

Leucanthemum Crazy Dazy – a good name for this colourful newcomer with its 'shaggy' petalled white flowers. Will produce some flowers in the first year.

Salvia Patio Sky Blue – even if they do not know the name of this plant, many people recognise the beautiful sky blue flowers it produces through the summer. This new introduction produces more flowers and flowers for longer.

Zantedeschia Captain Palermo – whether using annuals or perennials you can make quite a feature area with this stunning new plant which produces its dark purple blooms through the summer.

These are just some of the new items for 2017 to set the pulses racing, but remember, your floral displays do not have to feature this year's newcomers.

It's all about making your choice about what goes well together and not being afraid to try something different – to create that 'Wow factor' this year!



Salvia Patio Sky Blue



Zantedeschia Captain Palermo





Dahlia Bright Eyes

Dahlia Bright Eyes (Dobies) – a stunning newcomer with all the bright dahlia colours, often with a conspicuous ‘eye’, the colours sitting beautifully on deep purple foliage.

Felicia Pretty Blue – the cooling effect of blue flowers is always popular on hot summer days, so combine that with ‘daisy-type’ flowers and you are bound to have a winner. Ideal for baskets and tubs.



Felicia Pretty Blue

Geranium White to Rose (Dobies) – Wow! An unusual variety whose flowers open white and then begin to change through pink to rose. Thus with new flowers forming through the summer, there is always a lovely bicolour effect.



Lupin Avalune Mix – for something different, why not try this attractive annual lupin with flowers in ‘selfs’ and bicolours and what’s more, a lovely fragrance too!



Sweet Pea Sublime Scent mix – nothing catches the eye like the unexpected and a ‘wigwam’ of sweet peas in a large container in the middle of a town or village accompanied by the wonderful fragrance will stop people in their tracks!



This new class of sweet pea, the ‘floribunda’ has been achieved by crossing large flowered varieties with the old-fashioned small flowered but extremely fragrant ones – you get the best of both worlds!

Spring Seminar 2017

We had a very successful Seminar at The Palace Hotel, Torquay, with the special Guest presenter of Toby Buckland.

The day started with a talk by Stuart Lowen from Ball Colgrave on new trends in bedding. We then had a very good presentation from Mary Townsend and her team from Brixham on their success in the bloom.



Sarah Venn of Incredible Edible, Bristol gave a short presentation on her work in Inner Cities followed by Brid O Dwyer and Merynn Preece from the RHS who outlined some of the RHS projects underway at present.

The afternoon started with our special guest, Toby Buckland, talking on his favourite special plants

Darren Share MBE, from Birmingham parks, gave a talk on their Parks & the Gold medal exhibits at shows such as Chelsea flower show.



He then presented the 2016 Pride in Parks awards together with Toby Buckland

There were a total of twenty eight entries from the South West.

A treat for the street

Setting up a front garden festival.

Last summer I started googling 'front garden festival'.

We were in a new house and a new area of Bath and various events and experiences had jumbled themselves up into a loose idea that seemed to resemble a festival.

Our new house had a wonderfully spacious and wild back garden, by contrast the front garden was a disappointing expanse of block paving – we needed a front garden.

My wanderings around the Whiteway estate revealed a great network of green spaces, connecting the city below with open countryside a stones' throw up the hill – our bee superhighway credentials had potential!

Working outside the front of the house acquainted us with neighbours and passers by whose comments and conversations helped uncover some of the history of our house.

Simply by being outside working near the street meant we met new people.

While we were enjoying the luxury of more space my parents were in the process of downsizing, leaving a magical garden in Devon that they'd created from scratch. Walking round their garden for the last time it struck me that planting a garden is a huge act of generosity.

As I adjusted to this new set of circumstances and surroundings the idea for a festival began to form. Whiteway is on the edge of the heritage city of Bath. All the celebrating happens down the hill, but there's much here to celebrate too.

The search on google led me to Geoff Carr a garden designer in Cirencester. Geoff set up the Cirencester Front Garden Festival and he kindly talked to me about his experience. I also stumbled upon the RHS 'Greening Grey Britain' campaign, another source of motivation.

In Sept 2016 I started meeting a range of individuals and organizations. I'm an artist so I'm familiar with the visual arts scene in Bath but the gardening community was new to me. Three key organizations became early enthusiasts for the project and great collaborators – Bath City Farm, Avon Wildlife Trust and DNAarts.

One thing led to another- a name 'Blooming Whiteway', a logo, flyers, website, twitter, instagram, facebook – that was

the easy bit. Next came funding applications, constituting the group and setting up a bank account, not so easy.

Now we are a growing group of growers, some of us know things and all of us are learning. Jude, a friend I made through Bath City farm has been involved from early on. Together we've planned and run the activities, her academic background in nutrition, growing food and healthy behaviors along with her practical gardening skills have been invaluable.

Despite being the daughter of horticulturalists I'm no expert. My parents have provided inspiration, expertise and encouragement.....and plants! From the 1970s they were tenant smallholders, on a Land Settlement Association estate in East Anglia where we lived with 60 other grower families. During my childhood anyone who worked in an office seemed like an aberration to me – everyone around me lived in wellies, drove tractors and could summon up huge crops of lettuce, leeks and tomatoes for market.



South West in Bloom – New awakenings for 2017!

Another season of growing approaches and around the south west, 'Bloom' groups will be sitting down and making the decisions on those summer displays and what to grow to catch the judges eye on that all-important summer's day.

Here then some thoughts on what's new and how to 'wow' the judges! Annual Flowers – the RHS, rightly, has promoted the case for 'sustainability' and more use of perennials in our summer displays. But there is still a case for annuals to provide those 'eye catching' displays, be it in small borders, hanging baskets or other containers. Why not try incorporating some with this selection of striking newcomers many available from seed or young plants:



Begonia Rose Pico-

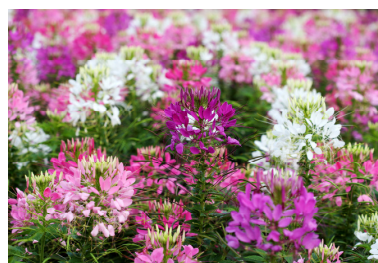
Begonia Rose Picotee – a dazzling newcomer available as young plants for 2017. Large 'rose-like' blooms of cream/white with rose picotee edges make this an ideal choice for container growing.

Calendula (Pot Marigold) Snow

Princess – this award-winning variety is the first white calendula which opens cream and whitens as the flower ages. Breeding work has also extended the flowering period of this easy to grow annual.



Snow Princess



Cleome Fireworks Mix

Cleome Fireworks Mix – large framed, statuesque plants, ideal if you have a large border to negotiate, or you wish to add height to a display. Flowers are borne in a range of colours. One possible disadvantage? The plants do develop prickly spines – so keep the children away!

Available as young plants.

Cosmos Rubies in Sunshine – for the back of a border or a large container, try this striking combination of the recently introduced soft yellow 'Xanthos' variety and a new deep rose/red variety 'Rubinato', stunning!



Cosmos Rubies in Sunshine

Presidents Message

Here we are again embarking on another year of “Bloom” with spring now upon us.

Many groups will by now have placed their orders for bedding plants and perennials. For some of our smaller groups, raising plants from seed can be a very cost effective way of producing large numbers of plants relatively cheap.

My own advice would be not to scrimp on compost, buy the best for purpose you can afford. Choose varieties that have a good long flowering period, colourful and easy to grow, like French marigold. You only need heat in the early stages with a little protection from frost, cold greenhouse or frames are ideal.

Spread the work between members and you will find each trying to grow better than the next, enjoying it, and you end up with the plants you want.

Most garden centres sell plastic modular cells in varying sizes. Try sowing direct a pinch of Wild Flower mix into each cell and produce your own plugs.

If you know of any towns or villages near you not in the competition, try and encourage them to join us, how rewarding it can be. I believe we have some new entries joining us this year, so welcome to them.

Not being able to join you this year, I understand the Spring Seminar, recently held in Torquay was another success, my thanks to my team and all of our speakers. It is on such occasions that you meet up, exchange ideas with other like minded people, and hope learn from the experience.

Once again our recently introduced Pride in Parks awards was well supported, my congratulations to you all.

We look forward to receiving your entries for this year, the award does demonstrate, the commitment of dedicated staff, maintaining our public open spaces to high standards for the public to enjoy.

However large or small your groups are, continue to enjoy what you do in the knowledge you are giving pleasure to many hundreds of people throughout the season, residents and visitors alike. Your IYN entries never cease to amaze, coming in so many forms from inland to coastal, each with the same goal, to improve the community you live in, keep it up.

Have a good summer; come along to see all your hard work rewarded at our regional presentation on Thursday 5th October 2017 at The Palace Hotel Torquay.

Vic Verrier MBE Hon President RHS South West in Bloom



Blooming Whiteway has morphed into more than three months of showcasing gardens. With DNAarts and AWLT we've put together a package of creative and growing workshops for two local schools. We're running regular free activities and events offering advice and support for all ages groups with a focus on families. We're gathering and distributing free stuff - my house is becoming a depot with donations of pots and plants and seedlings and saplings. And the connections keep on coming.

One of the most exciting of these is with the RSPB.

When we viewed this house for the first time and stepped down into the tangle of a neglected garden by way of a wobbly stack of bricks, a group of starlings flew over the house and over our heads to settle in one of the bushes at the bottom. What could be better than a house with starlings!

This estate has big populations of starlings and sparrows, their songs, sounds and movements punctuate the day as they move through Whiteway's network of green spaces, hedges and habitat.



An especially timely connection is PhD student Lauriane Suyin Chalmin-Pui's research into the impact of front gardens. Her project is a collaboration between the Royal Horticultural Society, the University of Sheffield, and the University of Virginia. The aim is to understand people's attitudes to gardens and to determine if domestic gardens, particularly front gardens, have an impact on health and well-being. Lauriane will be spending time with us, studying participation in the project, the psychology of why people garden, and how community and social cohesion may emerge from gardening activities. And this is, of course, the benefit of gardening and getting outside. Our project is founded on gardening as a catalyst for positive change.

Over the past few months while my creative practice is on hold I've been contemplating the idea of 'horticulture', growing as a creative pursuit and a gateway activity to other forms of cultural engagement.

Creativity is embedded in Blooming Whiteway: it's written into our constitution.

As our network has expanded we've been connecting with artists, actors, filmmakers and sound recordists alongside wildlife experts, play specialists, community groups, educators and local councilors. This festival is a huge and complex collaboration. We even have Bath City Football Club onside to help us achieve our 'Wildlife Goals'!

My aim is to establish a structure, draw in dedicated members with all sorts of skills and build a support network outside the group that will advocate for us. The festival officially launches on 6th May with a lantern procession through the estate and a fair in the park. What follows is still being planned – but the three months of the festival will be full of events and activities making the most of our human and wildlife networks.

Claire Loder Blooming Whiteway

2016 Pride in park Awards

NAME OF PARK/OPEN SPACE	TOWN/VILLAGE	AWARD
Curzon Street Churchyard,	Calne	2 Stars
Wye House Gardens	Marlborough	3 Stars
Phear Park,	Exmouth, Devon	4 Stars
Holy Trinity Churchyard,	Calne	4 Stars
Tregonigie Woodland,	Falmouth	4 Stars
Walled Gardens,	Cannington, Somerset	5 Stars
Apex Park,	Highbridge, Somerset	5 Stars
Vivary Park,	Taunton, Somerset	5 Stars
Troopers Hill,	St George, Bristol	5 Stars
Redcatch Park,	Knowle, Bristol	5 Stars
Horfield Common,	Horfield, Bristol	5 Stars
Brandon Hill,	Bristol	5 Stars
Keynsham Memorial Park,	Keynsham, Bristol	5 Stars
Beaversbrook Sports & Community	Calne, Wiltshire	5 Stars
Hillworth Park,	Devizes, Wiltshire	5 Stars
Manor Gardens,	Exmouth	5 Stars
Connaught Gardens,	Sidmouth	5 Stars
Blackmore Gardens & Sport Fields,	Sidmouth	5 Stars
Tessier Gardens,	Torquay, Devon	5 Stars
Bicclescombe Park, I	Ifracombe, Devon	5 Stars
Royal Avenue Gardens,	Dartmouth, Devon	5 Stars
Devonport Park,	Plymouth, Devon	5 Stars
Marsh Mills Park,	Bovey Tracey, Devon	5 Stars
Victoria Park,	Redruth, Cornwall	5 Stars
King George V Memorial Walk,	Hayle, Cornwall	5 Stars
Trenance Gardens,	Newquay, Cornwall	5 Stars
Boscawen Park,	Truro, Cornwall	5 Stars
Victoria Gardens,	Truro, Cornwall	5 Stars

Britain in Bloom South West Pride in Park award.

The parks and green spaces in the South West with the Pride in Parks award continues to be a success and the 2016 awards were presented at the South West in Bloom Seminar at The Palace Hotel, Torquay on Thursday 2nd March.

You are able to enter your park for 2017 up to the **closing date of 12th June**. The criteria is very similar to last year and full details are available from the secretary or on our Web site. It is again important that the entry is community led, and there will need to be a community representative at the judging. The time allocation will depend on the size of the park or Green open space, and can be up to 2hrs.

You are to indicate on the entry form the estimated time needed to judge the entry.

Judging can take place from June until the end of the year, as often parks are better judged at different times. You will be able to indicate the general date for judging, but if you have a special event, we will try to judge it on a specific day, if sufficient notice is given. Details can be entered on the entry form, which should be returned to the secretary.

The entries are awarded one to five stars, the five star equating to a Gold award. Each park will receive a plaque, with the star rating, that will be suitable for displaying in the park.

There is a nominal entry fee of £20 for 2017



Entry forms are available from the Secretary or on our Web site.

www.southwestinbloom.org.uk

Closing date for entries

Friday 12th June.

**Parks entry form to be
sent to The Secretary
Denise James
by Friday 12th June**

The Secretary,
Denise James, 150 Charlton Road,
Keynsham, Bristol BS31 2JZ.
E Mail southwestinbloom@aol.com .
Tel No 0117 9865830