



With spring in the air - now is the time for Bloom groups to capture images of spring floral displays in the community - these will be useful to include in their portfolios to show to the judges pictures of your year round floral displays .



Important Dates for 2015

Regional Judging	Wed 8th July to Wed 22nd July
IYN Assessments	Wed 1st July to Friday 31st July
National Judging	Mon 3rd August to Friday 15th Aug
Presentation at Dartmouth	Thursday 24th September
Pride in Park Award	June 2015 to December 2015
Spring Seminar and Parks Awards	February 2016 Exeter

Our South West in Bloom Facebook Page is also a great way for groups to share what their group has been doing and network with other groups - if your group has a facebook page, we would love for you to join ours.

<https://www.facebook.com/pages/South-West-In-Bloom/193263914018665>



The Secretary,
Denise James, 150 Charlton Road,
Keynsham, Bristol BS31 2JZ.
E Mail southwestinbloom@aol.com .
Tel No 0117 9865830

Web Site www.southwestinbloom.org.uk

Britain in Bloom - South West Spring Newsletter 2015



Chelsea Flower Show 2014

We reported that our Garden at Chelsea won the Diamond Jubilee award for the best exhibit in the great Pavillion. In February we were also awarded the Lawrence medal (pictured) as our garden was judged the best exhibit of entries in all of the RHS shows during 2014. Another great achievement for the team.



Britain in Bloom South West Pride in Park award 2015

Closing date for entries Monday 1st June.

Regional Judging	Wed 8th July to Wed 22nd July
IYN Assessments	Wed 1st July to Friday 31st July

We are pleased to welcome our new main sponsors for 2015
Glendale and Merediths Nurseries.

Glendale



Judging Allocation Times

Class	Population Range	Allocation Of time
Mary Mortimer Trophy (Under 1,500) Cox Cup (1,500 - 2,499)	1000 to 2,499	2 Hours
Ayre Cup (2,500 - 5,499) SWTA Trophy (5,500 - 6,999) Preece Cup (7,000 - 8,999) Sargent Cup (9,000 - 11,999)	2500 To 11,999	2 ½ Hours
Portman Cup (12,000 - 18,999) St Bridget Cup (19,000 - 34,999)	12,000 To 34,999	3 Hours
Tesco Cup (35,000 - 79,999)	35,000 To 99,000	4 Hours

The above table includes

15 minutes for press opportunities and

15 minutes for the opportunity to discuss the portfolio, to give an overview to the judges of what they are going to see or a presentation using video/DVD or display boards.

You can **add 15 minutes** if it's your Neighbourhood entry is judged during the tour. You are advised not to include more than 3 IYN entries and only a **maximum of 30 minutes** can be added for IYN judging if you add more than one entry.

PENNANT CLASSES

The judging times in the Pennant classes will be the same time as allocated to a main entry on the basis of its population figure.

Judging time for the BIDS is 2 ½ hours

Presentation Day at Dartmouth Thursday 24th September 2015



Britannia Royal Naval College

ITINERARY FOR THE DAY

9.00 am	Registration
10.00 am	Welcome
10.15 am	Neighbourhood Awards
12.30 pm	Lunch
2.30 pm	South West in Bloom Awards
4.00 pm	Closing
4.15 pm	Judges surgeries for main Competition entries

The Dartmouth in Bloom group are arranging for a number of events to be available for those attending Dartmouth with the delegates at the presentation.

A list of accommodation deals will be available on our web site or the Dartmouth web site.



Tours of the College, River trips and visits to Coletton Fishacre and Greenway and steam railway journeys are also being planned. Watch out for details.

Last Date for Booking
Wednesday 9th September
Late bookings can not be taken due to requirements of the Naval College



Presentation Day at Dartmouth Thursday 24th September 2015

This year we will be holding the presentation ceremony in the very spectacular venue of the Britannia Royal Naval College, Dartmouth on Thursday 24th September.

The Dartmouth Bloom group, assisted by the Kingsbridge group will be acting as hosts for this very exciting event.

This is an active Naval College so there are special conditions that will be required. The number attending is restricted to 320 persons, and it will be necessary to send to the College names and vehicle registrations two weeks before the event. It will not be possible to change these after this date, and you will not be able to swap tickets, due to the security of the site.



The presentation will be theatre style in the Quarterdeck, with a buffet lunch being taken in the Mess Hall. (Below)

We anticipate this location being very popular, so it will be important to book early when the tickets go on sale from **1st July**. It will be possible to book On Line at our web site from this date. Tickets and full details will be posted to all delegates.

We have kept the price of tickets the same at £18 per person.

Disabled access is available, but details of those requiring special facilities should be provided to us in advance to enable requirements to be arranged.



You need to make sure that you have suitable footwear as the floors in the college are very highly polished wood and can be slippery.

Spring Seminars 2015

We had two very successful seminars at Melksham and Totnes



At Melksham Dave Brown spoke on the benefits of bloom, Patti Pinto the Engagement of Children & Young People. In the afternoon Robin Pearce gave a talk on grasses.



At Totnes Bob Edwards gave Dave's talk, while Patti repeated her one from Melksham.

In the afternoon Neil Lucas gave a very good talk mainly on Grasses. Bob Sweet finished the day with some slides from his visit to the communities of Singapore



We were very pleased to see our new sponsors Glendale and Merediths nurseries attended the seminar and put on a display to show their products and services.

We have decided that next year we will be holding one seminar at Exeter, where we will also be presenting the new Parks awards.



Its Your Neighbourhood 2015

Once again its time to greet the wonderful 'Its Your Neighbourhood' entries in Britain in Bloom South West. Welcome to all our entries returning and a huge welcome to those entering for the first time.

We again have over 500 entries in our South West Region an achievement which reflects the dedication and commitment of the hundreds of volunteers caring for their environment and community

Some points to remember-

Firstly it is not a competition – entries are assessed against criteria and not judged against each other. This means that there is no limit to the number awards given to each level of achievement and all entries can aspire to and ultimately reach the outstanding level.

Secondly, the entry will be visited by an assessor. The term assessor has been chosen in preference to a judge to indicate the supportive role he or she provides.

The assessors realise the work which has gone into each entry, want you to enjoy the assessing experience and will do everything possible to put you at ease. They will be looking at three areas, Community Participation, Environmental Responsibility and Gardening Achievement.

Community Participation (40%) is becoming increasingly important, but not to the detriment of the other two areas. A neighbourhood is a community after all and the assessor will be looking for an entry which demonstrates a sense of this.

Environmental Responsibility (30%) is an area where the assessor will be looking for how the entry demonstrates its care for the environment as a whole.

Gardening Achievement (30%) is so important to IYN's, it is the most visible of the three pillars which shows the civic pride in so much being achieved through horticulture with communities uniting and friendships forming creating tangible improvements to the quality of life in their neighbourhoods. However, remember, outstanding marks in this area needs to be supported by similar achievements in the other two areas if the highest award is to be realised.

Remember, it is the intention to make the assessment as enjoyable day as possible for both you and the assessor.

More information is available on the RHS website rhs.org.uk/communities/campaigns/britain-in-bloom/its-your-neighbourhood

And finally may I wish you every success in your entry.

John Goulden

COMPETITION ENTRIES 2015

Champion of Champions (J Wheatley)

Newquay in Bloom	Large Town
Bath in Bloom	Large Town
Falmouth in Bloom	Town
Midsomer Norton	Small Town
Dartmouth in Bloom	Small Town
Beer	Village
Tresco	Village

Tesco Cup 35,000 -79,999 (Tony Moore, (returning) Mark Logan)

Weston in Bloom	Paignton in Bloom
Torquay in Bloom	

St Bridget Cup 19,000 -34,999 (Christine Fraser (returning) Martin Abraham)

Exmouth in Bloom	St Marychurch & Babbacombe
Yeovil in Bloom	Portishead in Bloom
	St Austell

Portman Cup 12,000 - 18,999 (Terry Porter, Lesley Jellyman)

Calne in Bloom	Devizes & Ridgeway
Keynsham in Bloom	Tiverton in Bloom
	Truro in Bloom

Sargent Cup 9,000 - 11,999 (Tim Ely (returning) Bob Sweet)

Ilfracombe in Bloom	Melksham in bloom
Sidmouth in Bloom	Tavistock in Bloom
Thornbury in Bloom	Helston

Preece Cup 7,000 - 8,999 (Rob Harkness (returning) Richard Budge)

Glastonbury in Bloom	Hayle in Bloom
Seaton in bloom	Sherborne in Bloom

SWTA Cup 5,500 - 6,999 (Jane Pagano, (returning), Kim Parish)

Marlborough	Torrington
	Kingsbridge

Ayre Cup 2,500 - 5,499 (Penny Skelley, (returning) Steve Clampin)

Budleigh Salterton	Radstock in Bloom
Pride in Paulton Partnership	St Just in Bloom
Sodbury in Bloom	Lyneham & Bradenstoke

Cox Cup 1,500 - 2,499 (Aaron Lammin (returning), Michael Foy)

Cannington in Bloom	Milborne Port
---------------------	---------------

Mary Mortimer Under 1,500 (Richard Taylor , (returning), John Goulden)

Chew Magna	Clovelly	Marazion
St Issey in Bloom		Millendreath

Please note, the Allocation of judges is at this time provisional

Pennant Entries

Due to the success of the Pennant entries, we are continuing these classes, but with the village section, there will be a combined class for the whole of the area. We will also ensure that the pennants awarded are of a higher standard of those awarded last year.

Northern Area Town

St George in Bloom, Bristol
Greater Fishponds (HEF's)
Clifton, Bristol
Wells in Bloom
Taunton in Bloom
Knowle, Windmill Hill & Filwood Broadway NP
Royal Wootton Bassett

Judges Stevie Rogers, Paul Smith

Village

Temple Cloud in Bloom
Floral Friends of Frampton
Hele Community Group
Berryarbor in Bloom
Plympton St Maurice
Bovey tracey

Judges Tom Sharples

Please note, the Allocation of judges

Southern Area Town

Pride in Brixham
St David's, Exeter
St James, Exeter
St Thomas, Exeter
Totnes Gardens
Wonfor Village

Judges Andy Cole, John Noble

Bids

**Tavistock
Newquay
St Austell**

Judges To be allocated

is at this time provisional



SOUTH WEST

The RHS has just launched new branding, with more details out later. It is too short notice to include more details in this newsletter.

However this is the new South West in Bloom Logo that we will now be adopting.

Exchange House, Taunton



Meeting Rooms of Excellent Quality

If you require a high quality Meeting Room in the South West, our outstanding venue offers the perfect environment. Our prestigious location benefits from original mahogany panelling and comfortable, fully equipped rooms to ensure the best place to host your Meeting.



www.exchange-house.com

01823 273100

A community effort

Most of you reading this newsletter will appreciate the vital role that local communities play in the Britain in Bloom and It's Your Neighbourhood campaigns. These initiatives not only transform our villages, towns and cities – they bring together people of different ages, backgrounds and interests in pursuit of one main aim: to improve the place where they live and work.



A recent RHS survey of 230 BiB groups found that 90% of respondents felt that the most significant impact of their campaign was on community development. Furthermore, many In Bloom groups believe that taking part in the competition increases the sense of civic pride, as well as reducing crime and anti-social behaviour. Every community is different. Villages and small towns have less people to draw on, but may already have established a tangible sense of community whilst larger towns and cities may have many businesses and organisations to work with, but lack a cohesive force. Whichever category you are entering, you should try to involve as many sections of the community as possible. From Rotary clubs to schools, charities, Young Farmers' clubs, businesses and council departments, everyone has something to offer.

Meeting the judging criteria

The importance of community participation is reflected in the judging criteria which accounts for a quarter of the total marks. This means that displays may look stunning, but if there has been little or no attempt made to involve local people and businesses, entrants are highly unlikely to receive any of the highest accolades. So, judges will be looking for evidence of involvement from as many areas of the community as possible. This could include making links with local schools and working with pupils on a range of activities from school gardens to running competitions.



Young people are a great resource: they tend to be creative and passionate about their environment, so it's important to find a way of engaging them through forums such as social media, which can also be used to involve other areas of the community. Also, remember to introduce young people to the judges when they are making their tour.



Residents from Kensington House and members of Kensington Roads Residents Association along with representatives from St George in Bloom and South West in Bloom all gathered at Kensington Road to meet the RHS team to discuss the project. We also met the photographer who took photographs on behalf of the RHS of the site together with the residents

and some photos of Kensington Road.

We are delighted with this wonderful news, and it is a tremendous accolade for Kensington Road, St George in Bloom, South West in Bloom and for the City of Bristol in Green Capital Year 2015.

Grenville Johnson

Chairman's address

2015 promises to be a special year with our largest entry into the National competition. Congratulations to all our entrants, we wish you well.

Our association with the RHS continues to be developing and the concept of RHS Community Outreach is certainly an initiative that is in full accord with the aims and aspirations of South west in Bloom. The new bloom brand has been launched and we would encourage all Bloom groups to use the brand format as this is likely to enable sponsorship and investment. The highlight of 2015 so far was the award of The Lawrence medal by the RHS for our 2014 Chelsea exhibit..

Entries seem to be holding and IYN increasing. We have a new main sponsor in Glendale/Meredith and continued support for Viridor "Revive", Amberol and The Exchange, Taunton and I would ask that you all maximise the effect of their involvement.

In any organisation people really matter and we in SW in Bloom have an excellent team in all areas. Can I express my personal thanks to everyone for their contribution to the furtherance and development of Britain in Bloom. You all make up what is fast becoming the largest volunteering campaign in the UK with brilliant results.

To the South West Britain in Bloom represents sustainability, quality and excellence in coming for and developing on wonderful landscape for tourism and the environment. Lets all continue to work together and maintain and develop Bloom.

Jon Wheatley
Chairman , Britain in Bloom - South West

St George street setting in Bristol to be featured at RHS Hampton Court Palace Flower Show in 2015.



I am delighted to share some wonderful news for St George and the City of Bristol. The Royal Horticultural Society (RHS) recently launched a community street project.

The project invited community groups to identify a community space that needed to be regenerated. The selected space will be shown at RHS Hampton Court Palace Flower show this year, and elements from the show garden with plants will be donated to the group after the show.

I applied for this competition on behalf of Kensington Road Residents Association and St George in Bloom for an improvement to the frontage of Kensington House, a hostel managed by St Mungo's in Kensington Road, BS5 7NB.

Kensington Road Residents Association in St George, Bristol is an RHS 'It's Your Neighbourhood' community group, and their success led to the formation of St George in Bloom who won the Gold Pennant from RHS South West in Bloom in 2014.

I am delighted to inform you that my application was successful, and yesterday, Friday 6th March, we met Dave Green the Show manager of RHS Hampton Court Palace Flower Show and the designer for the community street project Nigel Dunnett, Professor of planting design and vegetation technology, and Director of the Green Roof Centre, University of Sheffield.

The gardens of the St Mungo's hostel will be transformed by the RHS. The idea behind the transformation at Kensington House is to dramatically improve the outside environment for the ten residents living at the temporary home.

The project also aims to enhance the overall health and wellbeing of the wider community, as the final garden will not only transform the appearance of the street, but bring the community together as a whole.



Through the RHS Britain in Bloom campaign the RHS supports community groups across the UK to help them improve their local environment and boost quality of life for residents, changes which also help to combat crime and anti-social behaviour and develop a sense of civic pride.

Seeking commercial support

Businesses are an important part of the community and a useful resource – not just for funding. Share your vision with them: they may have expertise or useful contacts to offer; be able to loan equipment or provide volunteers to help out. Many of our customers also approach businesses to sponsor their self-watering containers as a mutually beneficial advertising strategy. You could also appoint a community champion with the brief of creating links with different sectors of the community.

As suppliers to a whole range of Britain in Bloom entrants, from large cities to voluntary groups, we are often in awe of the commitment and co-operation that we encounter, so keep up the good work!



For more information about Amberol's self-watering containers, planterware and litter bins, go to www.amberol.co.uk.

About Amberol

Established in 1969, Amberol is a family run company which makes and supplies a range of horticultural products including self-watering containers, benches and talking rubbish bins.

For more information, visit www.amberol.co.uk, like our Facebook page, email info@amberol.co.uk or call 01773 830 930.

Britain in Bloom Web Site

Keep up to date with news of Britain in Bloom on our web site at

www.southwestinbloom.org

We are able to mail contacts from our web site, but when we send them out, quite a high number are unopened. Please make sure that our E mail address southwestinbloom@aol.com is added to your "safe senders list." You can find details of how to do this on Google, if you do not know.

Book the Presentation tickets on line from 1st July



Glendale

Glendale is one of the UK's leading green service specialists offering innovative solutions for the total management and maintenance of the green environment. Delivering exceptional quality and striving

for complete customer satisfaction, Glendale offers an unparalleled portfolio of nine specialist green services.

Glendale is delighted to be supporting this year's South West in Bloom with sister company Glendale Horticulture. As a leading provider of grounds maintenance services in the UK, we understand the importance of managing the green environment and the contribution that green spaces make to the pride, wellbeing and success of local communities.



2015 marks a milestone anniversary for Glendale as we celebrate 25 years since the commencement of our first contract in Rugby. Our 25th anniversary represents remarkable longevity, sustainability and success, illustrating the hard work and commitment of all our employees.

We pride ourselves on the professionalism and precision of every aspect of our duties and work tirelessly to put the people we employ and the people we work with, first.

Our clients include local authorities, private estates, utility companies, corporations, businesses, conservation charities, housing associations and the communities they serve.

Glendale would be delighted to assist you in any grounds maintenance, landscaping or tree management requirements. With 13 offices across the Southwest our local teams are available across the region. For advice, assistance and quotations please call 0345 838 6619.

glendale-services.co.uk
@GlendaleUK



Watch this space this year, we are working round the clock to create a buzz in Bristol and help make Bristol a pollinator friendly city!

Please do visit our website and get in touch, we're always on the look out for volunteers and support. Even though we are a fledgling project, we are in the process of becoming a registered charity and hope to continue our work on a greater scale with your support. As individuals you can sponsor a member of the BeeBristol family and as a business, we can offer a number of services and publicity to businesses in return for sponsorship like managed hives, meadows and more. This enables us to work with local community groups and support habitat creation for free!

Tim Barsby -
Director, BeeBristol

The award winning Victorian House Garden in St George, Bristol, will open its doors for the Chelsea Fringe Festival during May 2015.

Grenville Johnson's garden at 28 Kensington Road, St George, Bristol will be open for viewing for the Chelsea Fringe Festival from Monday 18th May 2015 until Monday 25th May .

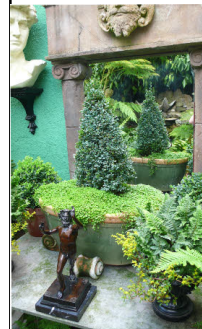
Viewings are from 10am to 3pm each day during this week. The entry fee is £4 for adults, Children free.

Proceeds from the open days will be donated to Kensington Road Residents Association to support their street environmental enhancement projects, and on going community work.

Visits / viewings must be pre-booked due to the small size of the garden.

To book phone 01179496788 or email: victorianhouse@blueyonder.co.uk.

The garden has been featured on B.B.C 'Gardeners World', 'The Great British Garden Revival' , and was selected by Alan Titchmarsh as one of his 30 'Best British Back Gardens' in his programme that was shown on ITV in January 2015. It is also featured in '100 Dream Gardens of England' as published in the book by Merrell in 2010



For a preview and the story of how the garden has evolved you can visit the garden website:

www.victorianhousegarden.pwp.blueyonder.co.uk

Further details of the open garden event can be found on the Chelsea Fringe website at: <http://www.chelseafringe.com/event/victorian-house-garden/2015-05-18/>



I became acutely aware of the plight of the UK's pollinator populations after spending time practising beekeeping. Having been involved in charities for the best part of a decade, I felt this was a cause that deserved more representation on a local level, and an issue I could address personally to implement change. From this revelation, BeeBristol was born.

Since the project's conception in November 2014 – following a welcome funding boost from the Bristol Green Capital committee – we have set about bolstering current efforts in Bristol about how best to save the dwindling populations of bees and other vital pollinators in the city.



Working closely with some of the city's more established environmental groups including Friends of the Earth, Human Nature, River of Flowers and the Bristol Pollinator Network. My colleagues and I have already launched a number of awareness raising and practical projects.

In February, working with the Human Nature Art show, we marked the first Greater Bristol Pollinator summit by commissioning a mural on the side of At-Bristol of a 12ft Honey Bee and are planning a number of other large murals this summer. We've planted two wildflower meadows and have big plans for more work this year including large exhibits in central Bristol that will encourage the planting of nectar and pollen rich wildflower, trees, shrubs and more.

We're working with At-Bristol to set up their first hive this spring which will feed down into the exhibition space and provide a video stream including technical data on the temperature of the hive and how many bees are flying in and out at any time. Our work with education will take us to presentations in schools and by utilising local volunteers on our planting days, we hope to teach individuals a love for pollinators and the skills they need to preserve them.



Merediths Nurseries is one of the UK's leading growers, specialising in bedding plants, perennials, herbs, vegetables and soft fruit.

Located in Gloucestershire, Merediths is a subsidiary brand of Glendale Horticulture which now ranks as one of the largest plant producers in the UK. It currently employs over 150 permanent staff which swells to 250 to meet seasonal trends and demands

Merediths are delighted to be joint sponsor of this year's South West in Bloom. Glendale Horticulture is one of the UK's leading grower and suppliers of perennials and bedding plants, we are passionate about gardening and making a difference to our environment and communities. Horticulture is our forte, and we are excited to be a part of the improvement and regeneration of local communities.



We are proud to utilise the very best modern techniques combined with trained horticulture professionals to consistently evolve our ever-expanding range. With seven locations

based around the Vale of Evesham we can offer excellent distribution to wherever you are located in the UK.

Supplying the country's leading Contractors, Garden Centres, Supermarkets, Local Authorities and DIY chain's with a diverse range of outstanding quality plants. We are dedicated and committed to growing with our customers and providing the highest level of customer care.

Merediths can offer excellent value to Southwest in Bloom committees, due to our regional location and scale.

Please call Martyn Fletcher on 01452 740216 for further information.

www.meredithsnurseries.co.uk

@GrowMerediths



Presidents Message

Following our recent AGM I am pleased to report that my committee have re elected me as your President for another year. I will do my utmost to support you all in our campaign to get our communities working more closely together for the benefit of all.

The RHS have announced that they are again fully supportive of the “Bloom” across all of our regions, with new branding and Logo in the pipeline for us all to use.

This year got off to a good start with successful Seminars in Melksham and Totnes, with over a hundred delegates at each. We thank you for your feedback which we will analyse and take on board for future events.

Entries are now steadily coming in to the secretary, please try and match the deadlines to help make our coordination easier.

There are a number of new initiatives to look out for especially Art in the Landscape that can take on many forms, so I look forward to seeing what your groups put forward.

Our Pride in Park award will grow in 2015 so enter your park this year, details of what it entails in the newsletter. A Star ratings plaque will be awarded after judging that you can display in your Parks, these will be presented at a Seminar in Exeter next February.

Very soon now seedlings will emerge, containers planted, tree /shrub and sustainable planting completed, and duty rota's drawn up. Let battle commence. Details of all of the competitions, along with information relating to this year's prestigious presentation event at the Royal Navy College Dartmouth, are in the newsletter.

I wish all of the groups every success in whatever competition or IYN you are taking part in this year.

All good wishes

Vic Verrier MBE Hon President RHS South West in Bloom



Made onsite from the green garden waste that it receives, this PAS 100 certified compost can help improve the physical structure of any soil, thus easing workability and improving drainage on heavy clay and adding essential organic matter to sandy soils.

It also helps rebuild soils which have become compacted and damaged over time as well as being the perfect product to help maintain good soils in peak condition.

Containing vital nutrients such as nitrogen, phosphorous and potassium, and a ready-source of trace elements, the soil conditioners/composts can be used by a wide range of customers for a variety of applications.

Priorswood also offers a vehicle parts disposal service and an asbestos disposal service (charges apply).

Open 7-days per week 8am-4pm (closed Christmas Day, Boxing Day and New Year's Day), the Centre recycles on average 78% of the 'waste' they receive and provide visitors with that undeniable feel good factor of recycling.



[WWW. Viridor.co.uk](http://WWW.Viridor.co.uk)



Viridor Transforming waste



Viridor Transforming waste



Viridor Transforming waste

Important Dates for 2015

Regional Judging

Wed 8th July to Wed 22nd July

IYN Assessments

Wed 1st July to Friday 31st July

National Judging

Mon 3rd August to Friday 14th August

Presentation at Dartmouth

Thursday 24th September

Spring cleaning? Don't bin it ... bring it!



Spring is a popular time of year to have a clear out and consider what you are doing to reduce and make the best use of your waste. It's also the perfect time to visit your local tip, dump or as we prefer to call it your Recycling Centre.

Viridor operates 16 Household Waste Recycling Centres across Somerset and is encouraging everyone as part of their 'spring clear out' to bring as many items as possible to their local site. Often forgotten items for recycling include broken small electrical

appliances ranging from kettles and radios to CD players and hairdryers, even electric toothbrushes and power drills can be recycled.

With a typical domestic iron containing enough steel to make 13 food cans, it's good to know by recycling broken or unwanted items you are ensuring that valuable natural materials are conserved and not wasted and help the environment.

If you haven't visited a recycling centre recently, a visit to Viridor's recycling centre at Taunton, Priorswood is a great way to see how traditional 'dump sites' are changing.

Visitors to Priorswood no longer have to face long queues when they arrive, as they can check the live Queue Cam before setting off from home or en-route on mobile devices. Over 10,000 unique visitors have viewed the Queue Cam in the past 12 months demonstrating that the public find this a useful service, with reportedly shorter queues at traditionally peak times.

The site also has an amazing Re-use Shop. The Reuse Shop saves Somerset residents thousands of pounds in reprocessing costs and landfill tax by selling items that would otherwise be recycled at best or landfilled at worse.

In its first year, 119 tonnes of goods went through the Shop including 537 bicycles, 170 doors, 98 filing cabinets, 85 gates, 76 garden loungers, 51 lawnmowers, 50 ladders, 36 strimmers, 35 wheelbarrows, 21 barbeques, 31 suitcases and trunks, and two manual sewing machines.

In line with other recycling centres across Somerset, Priorswood has Revive compost/soil conditioner for sale.



Britain in Bloom South West

2015 SCHOOLS PAINTING COMPETITION

The theme for this year is

“A Day in the Park”

The age groups are as follows:

up to 6 years old

7 – 11 years old

12 – 16 years old

Artwork should be a maximum of A3 in size. On the back of each selected painting, put name, age, and name of school and name of city, town or village.

Please note we will try where possible to return the pictures, to a representative at the Presentation at Dartmouth.

If not collected the winners pictures will be returned later.

The best exhibit in each age category should be sent to:

Richard Budge, Truro City Council,
Municipal Building, Boscawen Street,
Truro, Cornwall, TR1 2NE

Closing date for entries is Friday 24th July 2015.

Awards will be presented at the South West in Bloom
Presentation Event, which will be held
On Thursday 24th September at Dartmouth



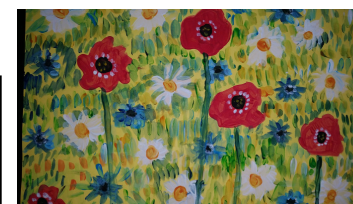
2014 Winners

7 to 11 years Old
Hayaad Abdirahman Mahamed
Age 11
Whitehall Primary School
Bristol



12 to 15 years Old
Indira Falle, Age 12
Mount House School
Tiverton

Up To 6 Years Old
Joseph Leahy, Age 5
Mount House pre prep
Tavistock



**New Discretionary Award for 2015
ART IN THE LANDSCAPE**



Remember during your judging tour to point out to judges the examples you have of **Art in The Landscape**.

There is a new discretionary award this year sponsored by our Secretary Denise James.

We have seen some fine examples of "Art in the Landscape". Judges will be looking at how In Bloom Groups have used innovative ways of interpreting art as part of their main tour.



This can be interpreted in a number of ways through living designs such as willow, water features, decorative wooden features, yarn bombing, murals, wall art, bug hotels, mosaics, sculptures or a recycled creation.

**Parks entry form to be sent to The Secretary
Denise James
by Monday 1st June**

The Secretary,
Denise James, 150 Charlton Road,
Keynsham, Bristol BS31 2JZ.
E Mail southwestinbloom@aol.com .
Tel No 0117 9865830

**Britain in Bloom South West
Pride in Park award.**



We are continuing to promote our parks and green spaces in the South West with the Pride in Parks award.

You are able to enter your park up to the **closing date of 1st June**. The criteria is very similar to last year, but it is important that the entry is community led, and there will need to be a community representative at the judging. The time allocation will depend on the size of the park or Green open space, and can be up to 2hrs.

You are to indicate on the entry form the estimated time needed to judge the entry.

There will now only be one class and all entries will be judged to the same criteria.

Judging can take place from June until the end of the year, as often parks are better judged at different times. You will be able to indicate the general date for judging, but if you have a special event, we will try to judge it on a specific day, if sufficient notice is given. Details can be entered on the entry form, which should be returned to the secretary.

The entries will be awarded one to five stars, the five star equating to a Gold award. Each park will receive a plaque, with the star rating, that will be suitable for displaying in the park.

The presentation of the Plaques will take place along with our Spring seminar that is to be held in **Exeter in February 2016**.

There is a nominal entry fee of £15, but to launch the new award, entry will be FREE for the first year.

Entry forms are available from the Secretary or on our Web site.

www.southwestinbloom.org.uk

Closing date for entries
Monday 1st June.

