

### Important Dates for 2015

Spring Seminar Melksham	Thursday 12th February
Spring Seminar Totnes	Thursday 26th February
Closing Date for S W in Bloom Entry	Saturday 14th March
Closing Date for IYN Awards Entry	Saturday 14th March
Regional Judging	Wed 8th July to Wed 22nd July
IYN Assessments	Wed 1st July to Friday 31st July Mon
National Judging	3rd Aug to Friday 15th August
Presentation	Thursday 24th September

### **New Discretionary Award in 2015**

We are introducing a new discretionary awards for 2015, it is for **Art in the Landscape**.

The Park competition will continue in 2015 and has been extended, and now the **Pride in Park Award** need not be judged separate to the main tour. We will be providing star ratings for the park ranging from one star to the top award of 5 Stars. We are hoping to provide a plaque for each entrant to display in the park, if we can secure a sponsor.

There will also be a trophy for the **best Town or City Pennant entry** and the **best small town or Village entry**. It has also been decided to keep entry in the Pennant classes free.



[www. Viridor.co.uk](http://www.Viridor.co.uk)

#### **The Secretary,**

Denise James, 150 Charlton Road,  
Keynsham, Bristol BS31 2JZ.

E Mail [southwestinbloom@aol.com](mailto:southwestinbloom@aol.com)

Tel No 0117 986 5830

Web Site [www.southwestinbloom.org.uk](http://www.southwestinbloom.org.uk)

## **Britain in Bloom - South west Autumn Newsletter 2014**

### **Chelsea Flower Show 2014 Gold Medal & Diamond Jubilee Award Winners**



The South West in Bloom garden at Chelsea not only won a Gold medal, but also the top award in the Great Pavillion with the Diamond Jubilee award. Congratulation to all those that helped



## National results in 2014( With Judges comments)

### Large Town Truro



### Gold Medal & Group Winner Britain in Bloom Community award

A very warm Cornish welcome was laid on and continued throughout the tour. The tour showed this county town off to great effect. The judges were shown beautiful vibrant floral features, well-maintained parks and a community spirit that was infectious. Truro should be proud of their entry that is clearly benefiting all those who live, work and visit this Cornish town.

### Gold Medal & Group Winner

Bath has been an entry into the UK Finals from the beginning of Britain in Bloom, and therefore also celebrates 50 years this year. Although Bath has always been known as a floral city, it now embraces the community spirit that is so important to the success of the ongoing campaign. With a chairman who has a passion for his city and the Bloom campaign, and a parks department with years of experience in delivering high-quality horticultural displays, Bath's place in Bloom history is assured.

### City Class Bath



### Urban Community Portishead



### Gold Medal & Group Winner Pride of Place Award

Portishead has been transformed from its heavy industrial past with high-quality and well-designed developments including great open spaces making it a delightful place to live. The judges were impressed from start to finish, and what a finish and celebration of all you have done! A band, a choir, and all those volunteers and supporters. The volunteers pulled out all of the stops and your route comprehensively demonstrated evidence across all of the criteria making you worthy winners of the category with a Gold medal to boot.

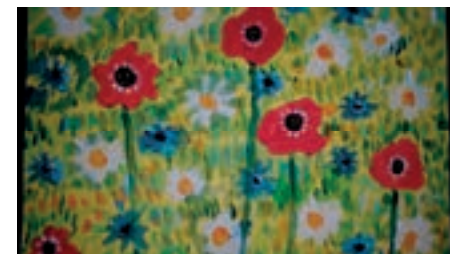
## South West in Bloom Winners of the Children's Painting Competition 2014

This year we were again pleased with the response to the Schools Children's painting competition. The theme this year was "POPPIES". The winning paintings were framed and returned to those who painted them, together with their certificate.



Up To 6 Years Old  
Joseph Leahy, Age 5  
Mount House pre prep  
Tavistock

7 to 11 years Old  
Hayaad Abdirahman Mahamed  
Age 11  
Whitehall Primary School  
Bristol



12 to 15 years Old  
Indira Falle, Age 12  
Mount House School  
Tiverton



### Adult Class

Dorothy Bazeley  
38 Greenway gardens,  
King Street, Tiverton.



## Pride in Park Award—South West

We introduced The Best Park competition as a trial in 2014 and it has been decided to not only continue, but extend it, and in 2015 it does not need to be judged separate to the main tour. It is hoped that the participation in the competition will increase in 2015, and entry forms will be found on our web site, and will be sent all our main entrants.

We will be providing star ratings for the parks ranging from one star to the top award of 5 Stars. We are seeking sponsors for this new venture and we hope to be able to provide a plaque for each entrant to display in the park.

Details of the criteria will be available on our web site or by E mail.

**South West Best Park 2014  
Nothenhay Gardens , Exeter.**



### South West in Bloom 2015 Schools Painting Competition

**The theme for this year is**

## “A Day in the Park”

**The age groups are as follows:**

**Up to 6 years old, 7 – 11 years old, 12 – 16 years old**

**Art should be a maximum of A3 in size. On the back of each painting, put names, age, and name of school and name of city, town or village.**

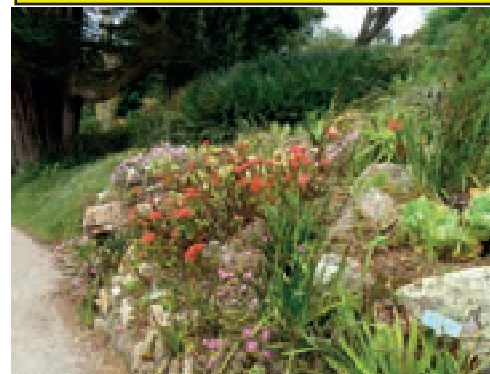
**Only one entry per age group, and they should be the winners of your local competition. Please note submitted works are non-returnable!**

**The best exhibit in each age category should be sent to:**

**Richard Budge, Truro City Council,  
Municipal Building, Boscawen Street,  
Truro, Cornwall, TR1 2NE**

**Entry Forms will be sent out with the Spring Newsletter  
Closing date for entries is Friday 25<sup>th</sup> July**

### Village Tresco



### Gold Medal

#### Conservation & Wildlife Award

The internationally renowned island of Tresco (in Cornish Enys Skaw, meaning island of elder trees) is a horticultural gem set within the Isles of Scilly archipelago. After only a short period it has graduated from the regional to the national Bloom campaign, but despite this has been able to demonstrate so much that is both integral to their own principles as well as to those of Britain in Bloom. A wonderful, relaxed and informal island tour, ending at the unique Abbey Gardens, showed the community at its best.

### Silver Gilt Medal

This busy town is greatly enhanced by the levels of community effort engendered through its long-established Bloom campaign. The tour ended at the Chantry Community Centre, where several dozen of the members of the Bloom and its associate groups were present to celebrate their work in the past year. It is clear that Thornbury in Bloom is moving with the times, working well with the local authorities that are involved and having increasing roles in taking the lead in some of the relevant activities.

### Town Thornbury



### Seaside Sidmouth



### Silver Gilt Medal

A first visit for us to judge this attractive seaside town. The efforts made to introduce colour and a variety of different subjects are to be applauded and these are welcoming for everyone. The Folk Festival gave another dimension, and added to the enthusiasm of all the volunteers in your group. Thank you for your hospitality. We left with fond memories.

## Chairman's address

When we set out to plan the 50<sup>th</sup> year celebrations for RHS South West in Bloom, we set some very high targets. With the help and support of all in the region I am pleased to say Congratulations to you all in exceeding the many targets we set. Chelsea, Scotland, Hampton Court and Trowbridge when linked to your achievements, in both the Nationals and regional competitions are all excellent examples of how In Bloom has met its targets.

It's Your Neighbourhood, continues to be successful and whilst needs developing (a project which we have in hand please see the website in due course) is one of the finest examples of volunteering in the UK. We must thank the RHS for their continuing support and vision in supporting bloom as part of its community outreach programme.

I now turn to the future, our parks are under threat from successive cuts in local government expenditure and I am convinced that the only way forward is for communities to regain their management and champion their retention and development. South West in Bloom are committed to the development of a community based award system for parks and green space. Such a scheme should not be a costly one, but will involve a star award system.

For those of you who have won gold flags and other awards, please do your best to celebrate them, within your communities and remember that South West in Bloom is successful because every individual involved makes it so!

Thank you all most sincerely for your help, assistance and support and I look forward to working with you all to further expand, promote and develop this wonderful initiative in the South West of England, to the benefit of all.

Can I add my thanks to our sponsors Viridor and Amberol for their support during the past year.

Jon Wheatley

Chairman

Britain in Bloom - South West



## TOTNES

Comfortably placed in the rolling red-earthed hills of South Devon, Totnes is a remarkable town. It is blessed with a fascinating history and stunning location on one of Britain's most beautiful and historically significant waterways, the River Dart.



Castle

Totnes has a national reputation for its lively and diverse community and for welcoming people from all walks of life, from all corners of the globe. It is home to a cosmopolitan mix of people and their wide range of interests foster exciting cultural activity and passionate exploration of new ideas. Totnes is an intriguing mix of historic market town and bohemian culture. There is truly something for everyone here.

Totnes retains a strong hold on its heritage. Our main street is reputed to have more listed buildings per head of population than any other town in Britain. A range of traditional attractions, including the Elizabeth Market, held every Tuesday from May to September, still comfortably fit their historic niche. The many heritage attractions of the town include the Town Mill, The Guildhall, Totnes Image Bank and Photographic Archive, Totnes Elizabethan Museum and Study Centre and The Museum of Costume, Fashion and Textiles. There are many other notable buildings and monuments. They are all guarded by Totnes Castle, a classic Norman motte and bailey with commanding views of the Dart Valley.



Church



Mill Tail

In its recent past, Totnes became well known for its connection with therapists of all kinds and alternative lifestyles. Unique, quirky and photogenic, in a survey of travel writers it has been voted one of the ten funkiest towns in the world. Yet Totnes has a slow feel and safe ambience. Perhaps in part due to its close proximity to the Dartington Estate and its strong arts and crafts pedigree, many well known writers, musicians and other creatives have made a happy home in its environs.



East Gate

## Spring Seminars

**Thursday 12th February 2015**

**10.00 a.m. to 3.30 p.m.**

**Melksham Assembly Hall,  
Market Place, Melksham. SN12 6ES**



**Thursday 26th February 2015**

**10.00 a.m. to 3.30 p.m.**

**Civic Hall, High Street, Totnes, TQ9 5SF**

### Speakers

**Neil Lucas, Member of RHS Council & Owner of Knoll Gardens**

\*\*\*\*\*

**Patti Pinta Congleton in Bloom, Cllr David Brown**

\*\*\*\*\*

**Cllr Les Wild Chairman Paulton Parish Council**

We are again holding two Spring seminars in 2015, and the programme will be the same at both of them. We are again holding one in the North and one in the Southern part of our area to try and keep travelling costs to the minimum. Costs are being held the same as in 2014, and we hope the response this year will be as good as in 2014. As budgets are tight we have put together a similar package to last year with lunch included at **£12.50 per delegate**.

### Provisional Programme

- 10:00 Coffee
- 10:30 Welcome & introductions
- 10:45 **Cllr David Brown, Cllr Les Wild** Benefits of Bloom
- 11:45 **Patti Pinto** Engagement of Children & Young People
- 12:30 Lunch
- 13:30 **Neil Lucas** Grasses and sustainable planting
- 14:30 Guide to a Portfolio
- 15:00 Open Forum, with panel of speakers
- 15:30 Close



**All main & Pennant entries that are received before 31st January will receive one free ticket to one of the Spring seminars.**

**BOOKING FORM ENCLOSED**  
Closing Date Monday 2nd February

**Seminar £12.50 Per Delegate.**  
Including Lunch

## VIRIDOR

Viridor was proud to sponsor SWIB for a 6<sup>th</sup> year in 2014, through its compost and soil conditioner, Revive.



Viridor was also delighted to provide Revive to the SWIB team for their fantastic South West England themed stand that won Gold and a special Diamond Jubilee Award at Chelsea Flower Show.

With the high temperatures the team faced putting the stand together, Revive's excellent moisture retentive properties helped the displays stay fresh and reduce wilting.

As well as helping horticulturists win medals, Revive is ideal for mulching on allotments, vegetable plots and herbaceous borders in the autumn and mixing with soil when planting out shrubs and bedding plants in the spring.

The high level of organic matter in Revive aids moisture retention in the summer and helps bind soil together to combat soil erosion in wet winters.

It provides major plant nutrients plus a wide range of minor and trace elements for healthy and vibrant plant growth of roots, fruits and flowers

Revive is manufactured to BSi PAS100 and Compost Quality

Protocol which is an independently audited quality certification.

A 100% peat free product, made from sustainable recycled green garden waste, it's available in 40L bags at Somerset Household Waste Recycling Centres with larger quantities available if purchased from

<http://www.viridor.co.uk/our-operations/recycling/composting/revive/>



**WWW. Viridor.co.uk**

## AMBEROL Creating an impact with containers

*Patience Atkinson-Gregory of horticultural suppliers Amberol ([www.amberol.co.uk](http://www.amberol.co.uk)) explains why self-watering containers are a popular choice with Britain in Bloom groups across the UK.*



Many In Bloom groups have a secret weapon in their competition armoury – self-watering containers. If space is at a premium, or you have a communal area that is an eyesore, using planters can be a flexible and affordable way of creating an horticultural oasis in even the greyest of landscapes.

Container gardening is suitable for pretty much anyone: schools, businesses, gardening beginners and professional horticulturalists. They also offer some control in the face of the unpredictable British climate. You can locate containers according to the types of plants being grown, placing them in sunny or shady conditions, sheltering delicate plants from exposure. You can also use the most suitable soil and it's easier to reduce weeds and prevent damage from disease and garden pests.

### The maintenance issue

There is a perception that containers can be high maintenance due to the need for regular watering. However, using self-watering containers with a built in a sub-soil water reservoir reduces the need for maintenance. The capillary action matting system disperses water and nutrients as they are required, facilitating optimal growth. Each container has a filling point which rarely needs to be topped up more than once a week – even in the hottest of conditions.

### Combining beauty, durability and sustainability

Another common perception is that planters can be unattractive. However, there is a huge variety of shapes, sizes and materials on the market. Amberol containers are all made from recyclable poly-ethylene, but thanks to technological advances can be made to look like wood or terracotta. The popular Ambarrel planter resembles a wooden half barrel and looks imposing in many public settings, whilst hanging baskets made to look like wicker offer a longevity and sustainability that the real material simply can't match.

Container displays can look fantastic: up the pole baskets add height and variety whilst beehive and fountain planters create a stunning floral cascade effect. They are also useful for filling in borders or making drab patches of concrete come alive.



Melksham is gaining in popularity due to its ideal location on the A350, a main gateway to the magnificent Wiltshire countryside. Several bus routes serve Melksham, including the National Express from London, and Melksham trains connect to Bristol, London and Swindon. Melksham is the ideal satellite base for visitors seeking reasonable,



inexpensive accommodation and good eating-out facilities. Its position 10 miles south of junction 17 of the M4 on the A350 provides an excellent centre to explore nearby Lacock and Avebury and the attractive towns of Devizes, Bradford on Avon and the City of Bath. With its accessible and friendly welcome, you are sure to have an enjoyable and memorable visit.

## RHS Theme for 2015

The theme for 2015 will not involve a specific colour as this was a one-off for the Golden Anniversary of Bloom.

The theme will instead focus on the importance of green spaces for wildlife and our own health and well-being and what we can do to transform unloved spaces – however large or small – into great green spaces. The RHS will be organising an activity for groups to get involved with and more details about this will follow as soon as possible.

It will be printed in January's *Grass Roots* magazine, or alternatively it will be posted on the South West in Bloom web site

## Awards Presentation 2015

We are still investigating the location for the 2015 presentation event. It will be held on Thursday 24th September, in the South of our region. We are looking at locations in Devon & Cornwall. Details will appear on our web site when finalised.

## Spring Seminars 2015

If you have any particular questions you would like answered at the Seminars, please send them to the secretary prior to the event so we can have an answer prepared beforehand.

## MELKSHAM

In a beautiful pocket of rural Wiltshire, Melksham is a lovely market town situated on the banks of the Bristol Avon. It was once part of a vast royal forest; a favourite hunting ground of Tudor kings. It appears in the Domesday (Doomsday) Book and its prosperity was founded on agriculture and the woollen cloth making industry. Today the population is



around 23,000 and it is the home of Cooper Tires and modern businesses based on new technology.

A beautiful historic quarter in the Town Centre features St Michael and All Angel's Church, Canon Square and Church Walk. Nearby are the historic villages of Lacock and Castle Combe

and the splendour of the Cotswolds. The friendly Town Centre is full of independent shops and plenty of cafes, pubs and restaurants, with a regular Tuesday Market. Compact and easily accessible, Melksham's library, gym, swimming pool, tourist information centre and parks are all in easy walking distance of the centre.

Melksham has a wealth of clubs and societies for all ages and tastes. The strong and vibrant community spirit ensures a busy calendar of events, including the Scarecrow Trail at Easter, the Food and Drink Festival in May, and the summer highlights of Melksham Music Festival, Carnival, Party in the Park and Melksham Comic Convention. The popular Christmas Fayre features the highly anticipated switching on of the Melksham Christmas Lights, a spectacular display put on entirely by volunteers.

Melksham people take great pride in their town, and the effort and creativity invested in the Christmas Lights is matched by the dedication in adorning the town with fantastic flowers in summer.

There are some beautiful walks in and around Melksham, including the Riverside Walk along the Avon. The Conigre Mead Nature Reserve is a fascinating and tranquil space hidden just a few minutes' walk along the river. Managed by a voluntary team of enthusiasts, it is



home to dragonflies, butterflies and the occasional kingfisher.

The Kennet and Avon Canal also passes through Melksham, offering a great bike ride or walk to the famous Devizes Caen Hill Locks to the east and Bradford on Avon and Bath to the west.

### Raising the funds

Cost can be an issue for cash pressed councils and In Bloom groups, and it's true that they do require some financial investment. One way that many organisations have overcome this is by seeking sponsorship from local businesses. In fact, the 2014 RHS Britain in Bloom Champions of Champions, Shrewsbury raised over £28,000 in sponsorship from businesses to buy a whole range of equipment, from seeds to soil to containers.



This is a strategy successfully used by many of our customers across the UK.

So, if you haven't made self-watering containers a part of your 2015 Britain in Bloom plan, it might be worth looking at how they can enhance your entry.

### About Amberol

Established in 1969, Amberol is a family run company which makes and supplies a range of horticultural products including self-watering containers, benches and talking rubbish bins.

For more information, visit [www.amberol.co.uk](http://www.amberol.co.uk), email [info@amberol.co.uk](mailto:info@amberol.co.uk) or call 01773 830 930.

### South West in Bloom Web Site

Keep up to date with news of Britain in Bloom on our web site at

**[www.southwestinbloom.org.uk](http://www.southwestinbloom.org.uk)**

We are able to mail contacts from our web site, but when we send them out, quite a high number are unopened. Please make sure that our E mail address [southwestinbloom@aol.com](mailto:southwestinbloom@aol.com) is added to your **"safe senders list."** You can find details of how to do this on Google, if you do not know. Entry forms and the payment of entry fees for the Main Competition and entry forms for It's your Neighbourhood will be available to all entrants **on line in 2015.**

**You can book the Spring Seminars on Line from Jan 1st.**

If you have an E mail address then this will make booking easy and we can also E mail you details of events.

If your contact details change, please notify us.

## School Wins Suttons Tallest Sunflower Competition

Children in the South West were very excited to be the first in the country to try out the new giant sunflower 'Giraffe' this year. Suttons Seeds ran a competition in conjunction with South West in Bloom this year. Launched by Suttons in the SWIB Autumn newsletter last autumn, this competition gave schools in Devon the chance to grow the new Sunflower 'Giraffe' a year before it went to sale to the general public. Suttons supplied schools with some free [Sunflower Giraffe seeds](#) and challenged them to grow the tallest. The prize on offer was the height of the tallest sunflower in standing £1 coins. The winning school was Combe Down Primary School from Bath with a sunflower that reached 315 cms, Suttons Seeds presented them with a cheque for £160.



The gardening club at Combe Down Primary School is run by teaching assistant Joan Pearce .... Joan says "The year I was working in this last year was year 1 and we were studying the topic of growing so when your seeds arrived every child (60) planted a sunflower and then we transplanted them out into a sunny spot in our school garden. The children took it in turns to water them all through the summer and we managed to grow quite a few including the winning one. I also run a very busy gardening club every week and we grow a lot of fruit, vegetables and flowers and we compete in Bath in Bloom each year, winning a Bronze award this year. Its been a great honour to win this award and we look forward to growing the sunflowers again next year....thank you !!" Joan

New and exclusive to Suttons for 2015 (the year of the sunflower), '[Giraffe](#)' is the tallest sunflower bred and grown in the UK. 'Giraffe' is the result of Victoria Wakefield's work involving years of selection in our conditions to produce the tallest possible plants. This beautiful sunflower was displayed in the South West in Bloom Garden at Hampton Court this year and caused quite a stir as the blooms were planted around a statue of a giraffe.

Ideal for children, sunflowers fit in perfectly with the new curriculum of which gardening will be taught in schools from September 2014! Gardening will be taught in English schools from September 2014, a move welcomed by the Royal Horticultural Society. The consultation on reform of the National Curriculum, states that pupils from Key Stages 1-3 will be taught 'to cultivate plants for practical purposes' as a key activity in design and technology lessons.

### Sunflower 'Giraffe'

- British bred for British conditions, •Grows to at least 17ft high.
- Exclusive to Suttons - £2.99 RSP



## Presentation at Trowbridge



Trowbridge was very honoured to host this year's South West in Bloom Awards, particularly in this the 50<sup>th</sup> Anniversary year for Britain in Bloom!

With the recent development of the St Stephen's Place Leisure Park adjacent to the Civic Centre, including a Premier Inn, hosting and accommodating such a large regional event was no problem!

Indeed it seemed *everyone* wanted to discover Trowbridge and we hosted a total of 470 people for the main event, the largest ever!!

As the County Town of Wiltshire we were delighted to welcome so many visitors from the South West and from feedback received, it was a huge success. Working with the South West in Bloom team was a real pleasure.

Trish Carpenter

Council Secretary & Co-ordinator of Trowbridge in Bloom 2014 & event organiser for SWIB Awards Day



## NEW BLOOM CRITERIA

The Bloom Federation have decided to implement a revised set of bloom criteria for future years. The new criteria is likely to be in place for the 2016 season, however South West in Bloom have decided to pilot it in 2015. This will mean that we will judge 2015 along the lines of the existing criteria, but will also judge (assess you all against the new criteria as well) Awards will be based in 2015 in line with the existing criteria.

Judges and groups will be trained and advised accordingly. The final format of the new criteria is likely to be made available within the next two weeks and will be displayed on our website. In essence it takes the form of five sections, with Excellent equating to Gold, Very Good equating to Silver Gilt, Good equating to Silver, Satisfactory equating to Bronze and Developing equating to a Merit.

**Section A – Horticulture** will consist of 40% of the marks and will relate to A1, plant selection, A2 plant quality, A3 maintenance of planted areas and A4 overall impression.

**Section B – Environment** will consist of 30% of the marks and will relate to the environment, which will be divided into B1 natural environment, B2 local surrounds (streets and public places) with B3 local identity.

**Section C – Community** will consist of 30% of the marks and relates to community and consists of C1 community participation and education, C2 funding and support and C3 year round activity.

Will you all please watch this space for more details of this initiative, which is designed to simplify and raise the profile of the many wonderful community developments and initiatives that are taking place within Bloom.

Please Note Closing date for both Main and IYN's Entry

**SATURDAY 14th MARCH**

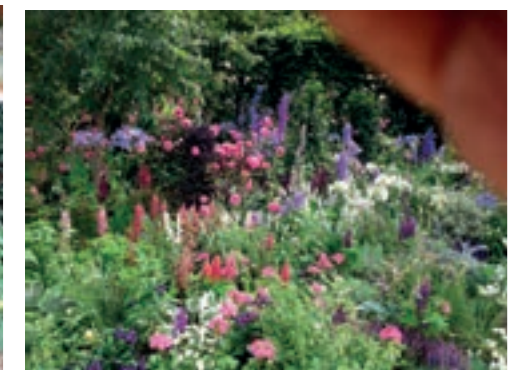
**You can book on line for both the main & Pennant class entry or the Spring Seminars on line from 1st January**

**Don't forget if you get your entry in by 31st January to claim your free ticket to one of the Spring seminars in Melksham or Totnes.**

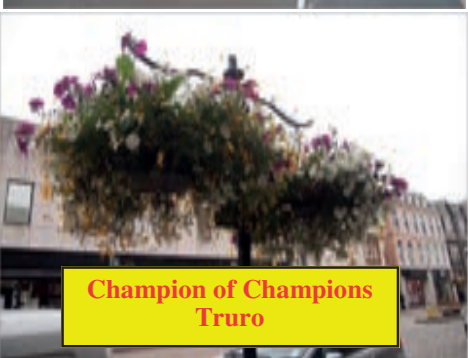
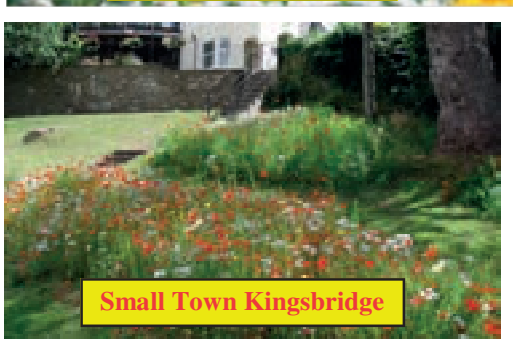
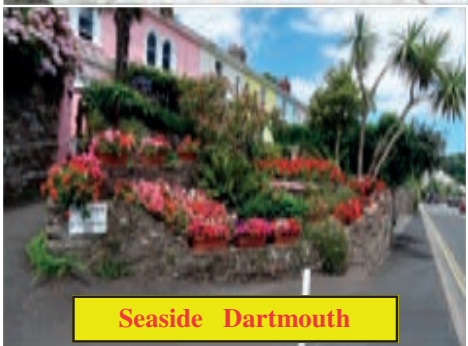
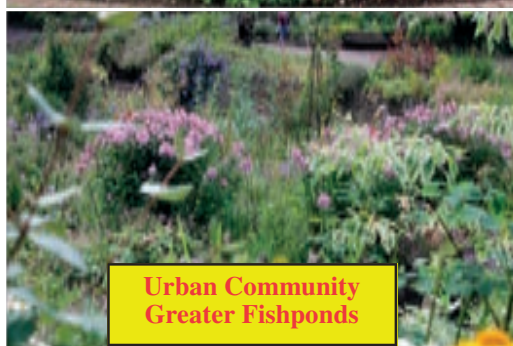
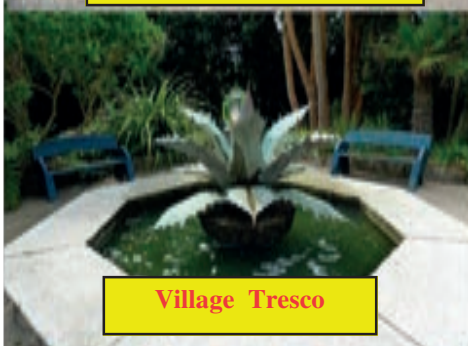


Gerald the Giraffe at the Britain in Bloom garden at Hampton Court. The garden was designed, grown and constructed by a team from South West in Bloom.

Trinity Academy at Midsomer Norton produced a selection of excellent Scarecrows to adorn the exhibit



## National nominations for 2014



## IYN and BEYOND

With well over 500 Its Your Neighbourhood Award entries from the South West 2014 was another highly successful year. There were many new entries and the enthusiasm shown throughout was one of the greatest joys for the assessors as they were welcomed by the entrants.

We hope all entries enjoyed the experience and will continue in the competition to achieve the Outstanding level or maintain it. The essence of the scheme is to improve the environment and community through excellence in gardening and the assessing of many entries this year has shown me that this principle is alive and well!

It is impossible in a letter such as this to advise individual entrants (this can be achieved by contacting your assessor through our secretary), but a good general principle is that the scheme is built on three core pillars, Gardening, Community and Environment. The most successful entries are the ones which fully address and meet the criteria in all three areas. Any entry which does not address all three pillars will not do well and could ultimately fail so, please, make sure the assessors are shown all the criteria and they are well addressed and demonstrated.

Some groups may wish to progress beyond IYN's or you may belong to a larger community wishing to take part in Britain In Bloom South West. This can be done with neighbouring IYN's joining together to enter the Pennant scheme by encompassing a larger area of the community. This will not prevent you still entering your original IYN and it continuing to be assessed in its own right.

This scheme is also open to communities larger than the average IYN including villages, towns and cities. The Pennant scheme is a good step for communities not quite ready for the main In Bloom entry but wanting to become involved.

It has many advantages, it is easy to enter, free, follows criteria of Britain in Bloom but is less demanding, does not require a portfolio and help and advice is available from the South West in Bloom judges and assessors,

The judging times are 1.5hrs for village to small towns and 2.5hrs for large towns and cities with an additional 1/4 hr for press and 1/4hr for a presentation (if entries wish to do one).

If you would like to take part in the Pennant competition please contact our secretary or our website.

Very best wishes to you all for 2015 which I am sure will be challenging but most rewarding.

John Goulden

**Need To Contact us - The Secretary,**  
Denise James, 150 Charlton Road, Keynsham,  
Bristol BS31 2JZ.

**E Mail** [southwestinbloom@aol.com](mailto:southwestinbloom@aol.com)

**Tel No** 0117 986 5830

**Viridor**  
Transforming waste™

[WWW. Viridor.co.uk](http://WWW.Viridor.co.uk)

## Best It's Your Neighbourhood Award 2014 Knowle West Lets Grow – Springfield Allotments Site

This project is fully inclusive involving local people and communities and certainly since it began has and is still making a difference to local people, in the way they eat and how they grasp the concept of fresh locally grown produce. The project is co-ordinated by Steve Griffiths, who has been involved with the project since it started. The allotment enhances what could easily be a neglected piece of land and is now a valuable asset to the community and also provides an educational resource for Health and Wellbeing.



The community can purchase local produce, allowing them easy access to local grown produce, with funds being generated back into the project. The project occupies 1.3 acres of land on the Springfield allotments in Knowle West. The aim of the project is to learn the local community how to grow great tasting local fruit and vegetables and enjoy eating them together straight off the plot. Fruit, veg, plants and herbs are all grown on the allotment, all of which are available for the local community to purchase.

The project has good links with the Brandon Trust, local park groups and local schools (plot to plate projects). High standards of horticultural practice are demonstrated throughout the project and allows the local community to access freshly grown local produce.

The local community can get involved in a number of ways by:-

- Chicken rearing – free range eggs
- Growing both traditional and unusual vegetables
- Helping to plant, grow and develop the orchard
- Growing and see planting in the polytunnel
- Building sheds, raised beds, outdoor kitchen/classroom, woodwork and construction
- Outdoor cookery sessions and gardening courses
- Creating a children's play space and picnic area and developing a pond and wildlife area



Help to preserve the beehive and learn about the craft of beekeeping

Steve is a real inspiration and certainly demonstrates a clear passion for the work that he is carrying out in his local community. The project will now go forward and represent South West in Bloom at the Nationals in 2015.

Please Note New Closing date for both Main and IYN's Entry  
**SATURDAY 14th MARCH**

## Bristol in Bloom News

It's been a busy few months for the Bristol 'Bloomers' which culminated in us hosting, with Bristol City Council, the RHS National Britain in Bloom Awards. The night was a huge success enjoyed by all and a real treat to see so many community-spirited people visit our beautiful city.



Aside from the dignitaries, the lovely people of the RHS council and organisers, and the smattering of garden glitterati, including the host Adam Frost (himself an RHS ambassador), Jekka McVicar (well-known for her herb nursery) and RHS council member Jon Wheatley (who has won 14 RHS gold medals), there came the 'real' people of the event – the 'Bloomers' themselves.

An impressive 71 communities were represented at the event, and what a jolly bunch they were! Whooping and

air-punching was abundant! There was so much joy, encouragement and support in that grand room for everyone involved.

As a new volunteer on the committee I have been humbled by the wonderful work that the group does to support the cities community groups, events and people. We saw lots of wonderful entries in the school's painting competition and such dedication in the school's growing campaign. Bristol's allotments continue to thrive and our neighbourhood groups see new members joining them constantly and relationships built which make communities happier and healthier places to live.

Bristol won the prestigious title of European Green Capital 2015, and as part of what will be a momentous year, we are proud to be the hosts of the Entente Florale Awards Event. Monica Whyte our Administrator and Pete Clark, recently retired from Bristol City Council, were proud to be presented with the Entente Florale flag at a special ceremony in Hungary this September.



The RHS have selected both  
**Truro and Bath**  
to compete in the 2015  
**Champion of Champions.**  
We congratulate them and  
wish them success in 2015



Richard Budge  
Awarded National Community Champion

## New Discretionary Award for 2015 ART IN THE LANDSCAPE



We are pleased to announce that a new discretionary award will be introduced as part of our 2015 judging tour, this award is being sponsored by Denise James. Over the years judges have seen some fine examples of “Art in the Landscape”. Judges will be looking at how In Bloom Groups have used innovative ways of interpreting “Art in the Landscape” as part of their main tour. This can be interpreted in a number of ways

through living designs such as willow, water features, decorative wooden features, yarn bombing, murals, bug hotels, mosaics, sculptures or a recycled creation. Denise James one of our former judges has over the years seen how her local communities in Bristol and In Bloom groups, have created some imaginative art projects into the natural landscape. More information on this new award will be available at our two spring seminars.



Please Note New Closing date for both Main and IYN's Entry

**SATURDAY 14th MARCH**

**You can enter these on line from 1st January.**

## Presidents Message

Cannot believe it is a year since I reported on the 2013 success of our region. You have again raised the bar, to make us one of the best regions in the country, so well done to you all.

Another record year for IYN entry's 520, thanks a lot to John Goulden who coordinates that section for my team. Good quality entries in both the main competition and the Pennant entries.

Our venue for the 2014 Presentation was Trowbridge celebrating our 50 anniversary, and they did us proud. The Mayor Councillor Glyn Bridges hosted a VIP reception in the Civic centre the evening before, that involved their Town crier in full regalia, addresses by the Mayor along with Jane Scott OBE Leader of Wiltshire Council, our chairman Jon Wheatley, and myself who made a special presentation to Bob Sweet for outstanding contribution to “bloom”

There were other important speeches and entertainment by the “Sounding it out Choir”.with a lovely supper to round off the evening, so thank you all.

The following day saw people arriving from far and wide to be met by a beautifully laid out Civic Centre from the entrance lobby, exhibitions, and the floral decorations in the main hall it looked fabulous. Mayors and chairman with their chains of office and around 450 “bloomers” assembled to hear how they had performed during the year. Guests of honour were Jim Buttress VMH along with Peter Holman Chair of South and South East in Bloom, and Stephanie Eynon from RHS together with myself presented the awards. It was wonderful to see so many young children involved, especially the youngsters from Trinity Academy, Midsomer Norton who sang at the end. Thank you to everyone at Trowbridge who made it so special.

The 50<sup>th</sup> Anniversary of Britain in Bloom was made even more special with the RHS choosing Bristol to host the event, as our region was involved from the start. The “Marriot” Bristol allowed Monica Whyte (one of the bloom ambassadors), and her team from Bristol in Bloom to show what they could do. We were not disappointed the venue was perfect, and the rooms looked stunning, well done. Once under way the accolades kept coming to the South West, the most successful year ever at National level.

My committee under Jon's chairmanship, never stop still, we reviewed at our meeting in Tavistock recently all of this year's activities. Thank you to you all for making the South West so great, all of my committee for their commitment and dedication.

Season's greetings to you all

Vic Verrier MBE President Britain in Bloom South West